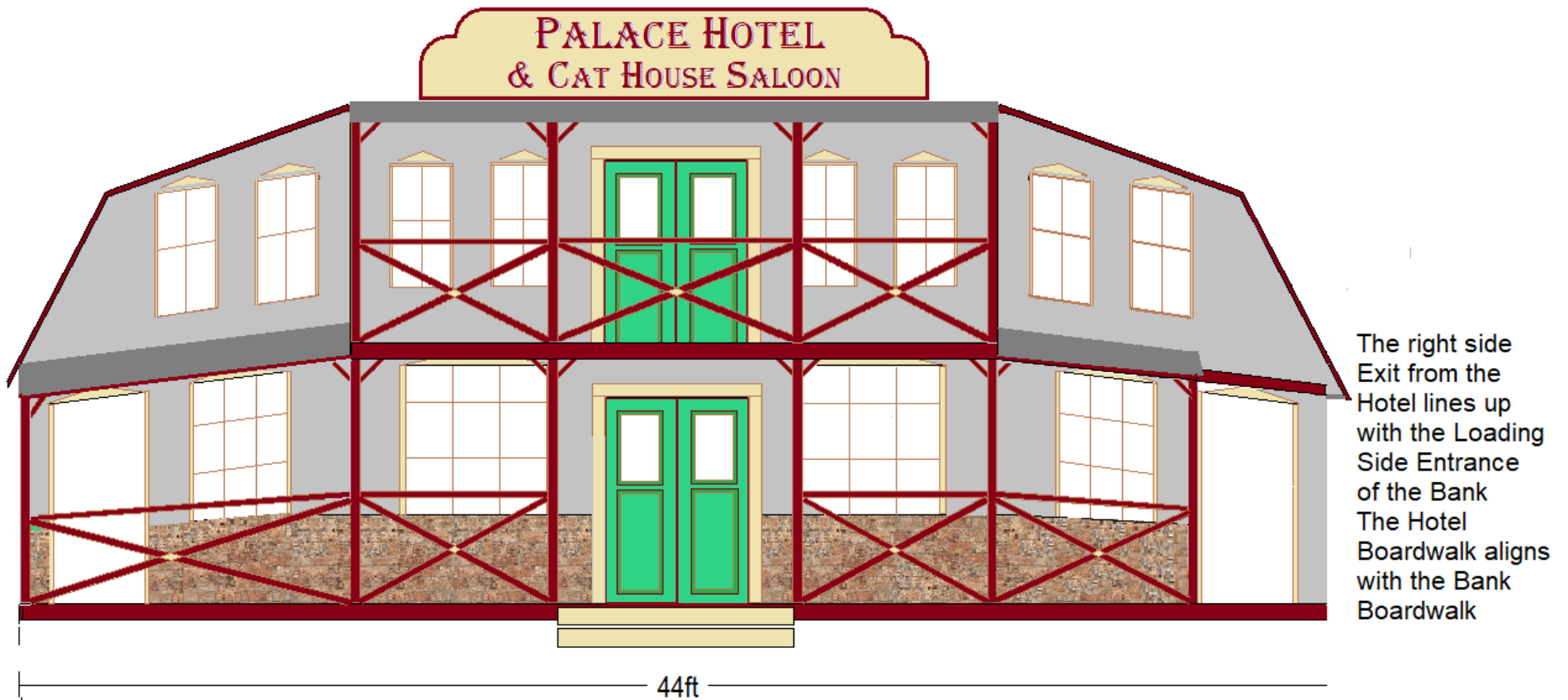


Page One

Modified Front View

The earlier set of drawings prompted several responses. Some I liked and some I didn't care for. We all agree that the budget was far more that we've ever paid before. That's because much of the materials are two and three times more expensive. I've endeavored again to keep the original ambience and cut where it seems logical to do so.

Attaching the hotel to the bank, much as we have done with many of our stages is a significant saving.

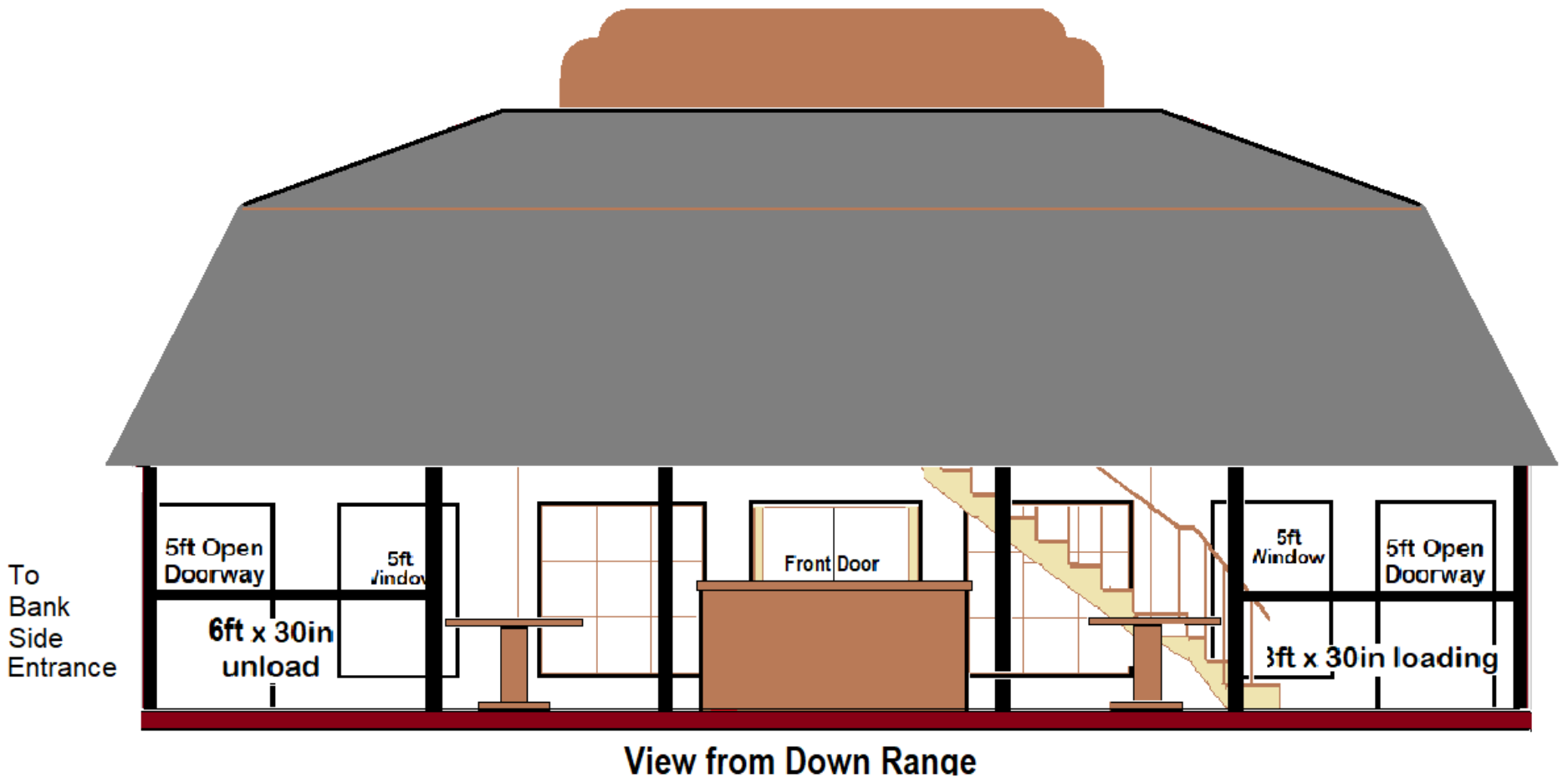


Page Two

Modified Downrange View

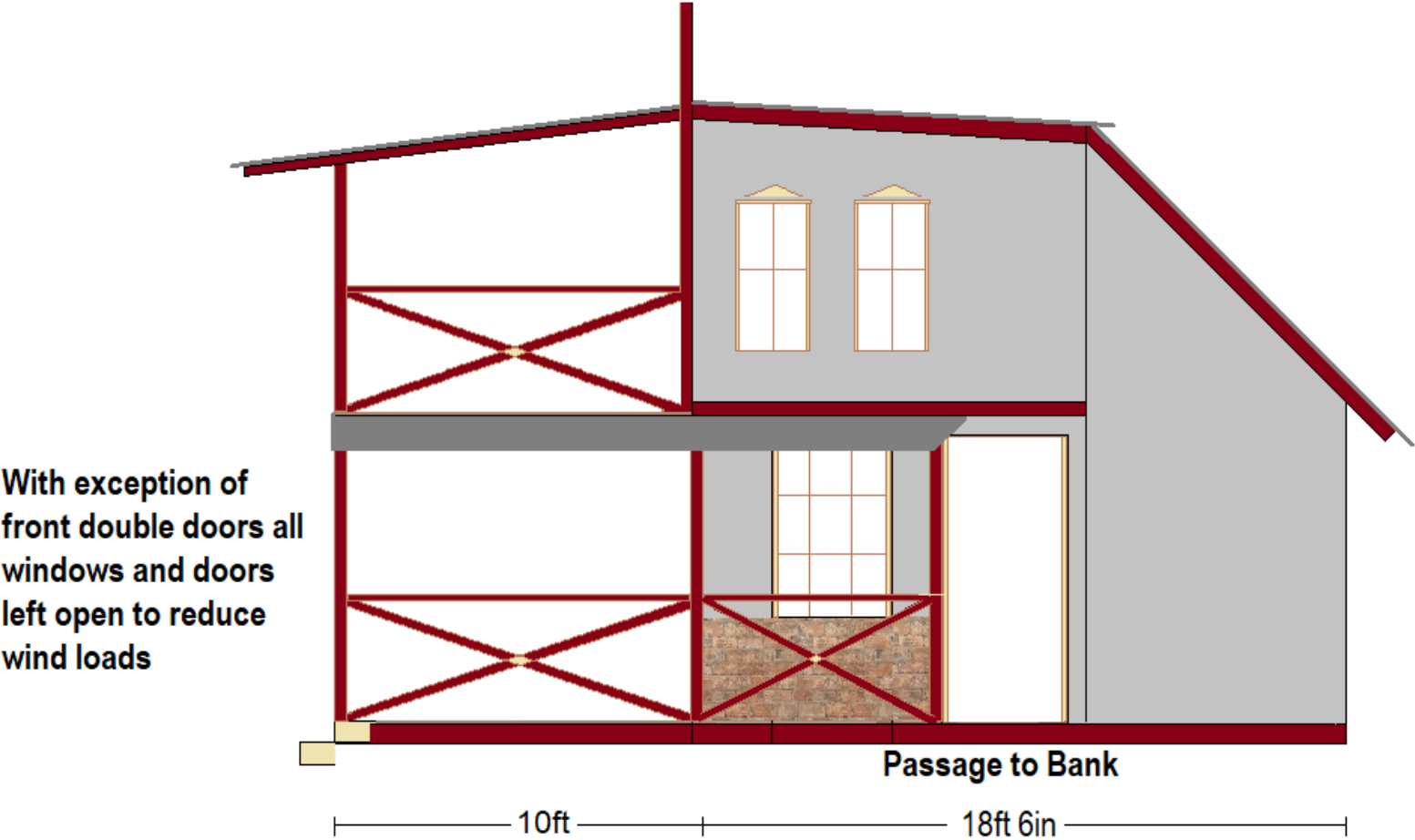
I discovered significant miss measurements in the height of the down range view. The firing line is still wide open with the highest open space above the firing line of all our stages.

Shooters may pass from the hotel to the Bank without ever leaving cover. The same will be true when passing from the General Store to the Hotel.



Page Three
Modified Bank Side View

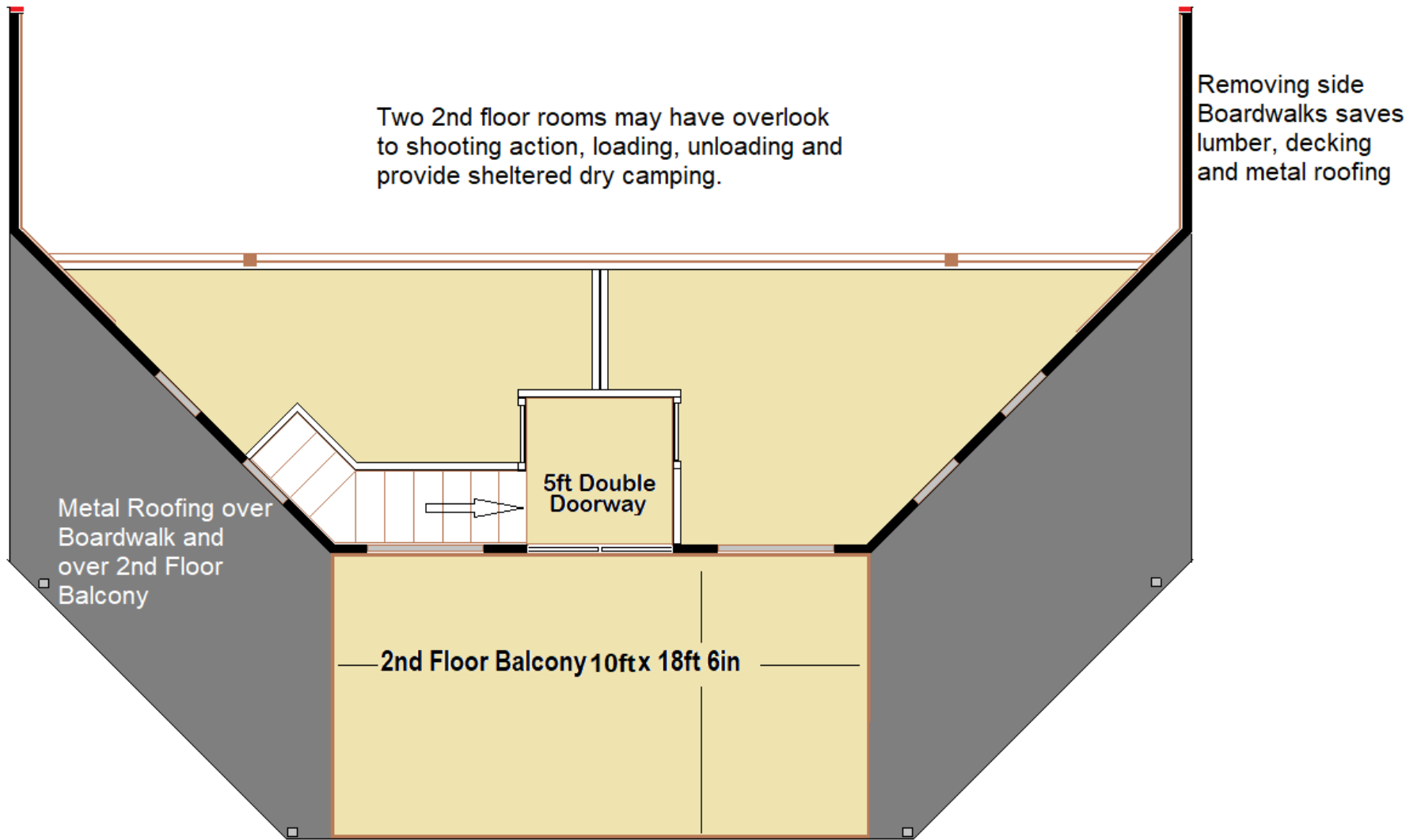
Adding a little color allows for a better understanding of how everything fits together.



Page Four

Modified 2nd Floor View

Possibly the biggest point of discussion will be the expanded 2nd Floor. The materials saving on the two side decks will be more than sufficient to deck the two rooms. Glenn suggested using the hotel as a gathering place. The 2nd Floor overlook makes the Hotel an even better place for after shoot gatherings.



Page Five

Modified View of the Footprint

Other than eliminating the side boardwalks the footprint remains unchanged. You may see that the exit from the Hotel lines up very nicely to the side entrance to the Bank.

